

Note of Meeting of

Health and Social Care Forum

Thursday 07 May, 10.00am – 12.00pm

Craig Mitchell House, Flemington Road, Glenrothes, KY7 5QF

Present:

Kenny Murphy (Chair)

Fife Voluntary Action

Jo Clark

Christine Davison

George Cuthill

Scottish Health Council

Bill Baird

Royal Voluntary Service

Bert Lumsden

Age Concern Glenrothes

Trisha Sproul

LinkLiving

John Jones

Express Group Fife

Charlie Kirsten

The Richmond Fellowship Scotland

Eileen McCrossan

Scottish Autism

Laurie O'Brien

Crossroads Fife Central

Linda Cruickshank

RNIB

Anne Buchanan

Alzheimer's Scotland

Carol Simpson

Frontline Fife

Kate Herbert

MECOPP

John Stirling

Disabilities Fife

Anna Rolink

SAMH

In Attendance:

Christina Naismith

Joint Improvement Team

Apologies:

Ewan Masson

Dunfermline Advocacy Initiative

Jane Maciver

LINK – East Fife Mental Health Adolescent Befriending Project

Senga Smith

LINK – East Fife Mental Health Befriending Project

John McKendrick

Fife Elderly Forum

Norma Philpott

CARF

Elaine Fox

Energi

Tam Cassidy

Circles Network

Kenny Macrea

Barony Housing Association

Jeanette Donnelly

Health and Social Care Alliance

Strategic Planning – Christina Naismith, Joint Improvement Team

The Forum welcomed Christina Naismith, National Programme Manager, Strategic Commissioning and Joint Improvement Team Partnership Lead with the Joint Improvement Team (JIT). Christina presented on what a strategic plan is in relation to Health and Social Care Integration, and what it should cover. Christina's presentation covered:

- The Public Bodies (Joint Working) Act 2014 and the key requirements
- Timescales for implementation of Health and Social Care Integration
- What a strategic plan is and how this links into strategic commissioning
- What a strategic planning group is and who is involved
- What locality planning involves and what the role of localities would be therein
- Where Fife currently is in this ongoing process.

In terms of timescales, Health and Social Care Integration went live on 01 April 2015. Integrated arrangements (including a finalised strategic plan and commissioning plan) must be in place by 01 April 2016.

A strategic plan is a high level plan; it is anticipated that this will cover the first three years of integration. Greater detail of how this will be delivered will be in an operational plan. Fife's strategic plan will cover all adult care services listed in the Integration Scheme. Christina stressed the importance of third sector input to the strategic plan. Workforce development plans will also include the third sector. Fife's strategic planning group has been meeting regularly.

It is recognised that local communities know what the assets/issues are in their area. This information needs to feed into the strategic plan so this rich data can inform where resources are needed more and where they are needed less. Fife has seven localities, each with an individual identity.

Important themes of integration include:

- A more joined up approach
- Inclusive and transparent processes
- Less decision making 'behind closed doors'
- Localities will have more decision making powers.

Once the strategic plan is consulted on and finalised, a strategic commissioning plan will be developed to outline how services are to be commissioned.

Q&A Themes

Skills required to plan and commission and how these will be developed

A multi-agency approach is being used so skills and resources from across teams aim to build on work already completed. The Forum discussed the various local groups and planning partnerships and the opportunities which could arise from working closer together.

Potential conflicts of interest for public sector

Discussion around how Fife Council and NHS Fife will manage the roles of commissioners of service and providers.

The importance of a common language was next discussed. Christina emphasised that if common terminology is something the third sector wanted it can push for this. People need to be able to

understand the strategic plan and empowering descriptions should be used. The third sector delivers preventative and anticipatory services, and there is a feeling that there needs to be better understanding of what this means.

Re-distribution of resources to meet local need

The management of re-distributing resources from a more affluent area to a more deprived area will be difficult. Elected members' relationship with their constituents may cause tensions where a resource is cut in one area and retained in another – service providers cannot continue to provide services universally. Discussion followed around 'pockets' of deprivation.

Locality planning

Self-Directed Support is a good example of how integration should work with a focus on personal outcomes and individual commissioning. The community empowerment bill also allows communities to propose that they are better able to deliver services. Public bodies must consider these proposals but can refuse them. FVA is working with partners around community asset transfers. The self-management agenda fits into management of health conditions and prevention.

Performance management

Performance management will be done through the Scottish Government's '[core suit of indicators](#)' – this will be developed into a dashboard. The top ten indicators are about how people feel, which is a positive driver.

3. Integration Update

Updates from the Shadow board development session

- The strategic plan was the main item discussed
- Main headlines of the strategic plan were provided along with a brief description of each item for discussion
- FVA will circulate the draft plan when this goes out for consultation. FVA will also organise a workshop to look at this in further detail to collate a detailed third sector response to the strategic plan consultation.

Shadow board meetings are open to the public.

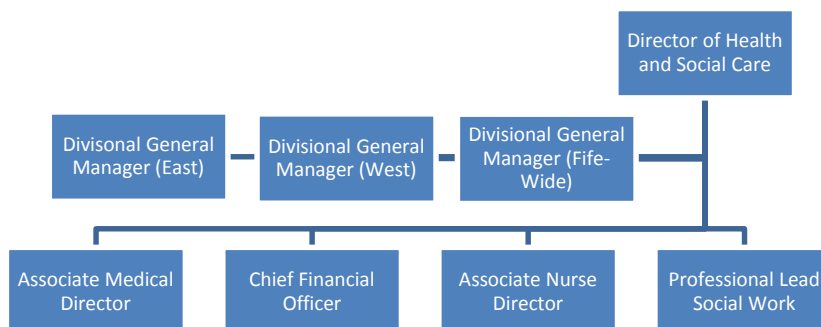
Action Christine Davison – to circulate shadow board meeting dates to the Forum.

It is not yet clear how the seven localities will be organised. Three divisional managers are in place and will report to Sandy Riddell.

- West Fife – David Heaney, current Service Manager (resources) with East Lothian Council
- East Fife – Mary Porter (secondment for 6 months)
- Fife Wide – Julie Paterson, current Head of Adult Services, Fife Council Social Work

Jan Carter has been announced as the Chief Financial Officer. Three clinical leads will also be part of the new senior leadership team.

The new strategic governance structures were discussed. Below is an outline of the latest information regarding this.



A new Health and Social Care Transformation Group will replace the Partnership Management Group (PMG) which has now dissolved. Some members of the current PMG will transfer membership to this new group. This group exists to support the senior leadership team.

It is noted that the following was raised as an area of concern:

Third sector representation on the Strategic Planning Group was discussed. Kenny and Jo attend as third sector representatives from Fife’s third sector interface. Other third sector representatives are also members of the group. The Forum discussed how representatives were nominated onto groups such as this. The Forum request that the criteria for being selected as a representative be made clearer.

Integrated Care Fund (ICF)

The ICF was originally announced as a one year fund, but has been extended to three years. An ICF board has been created but currently has no mandate or governance structure. Kenny will keep the Forum informed on future developments around this board.

The Forum discussed concerns around the selection of representatives and raised concerns over the transparency of processes.

There is further discussion on how, at an operational level things are happening, but at management level there are difficulties in risk management and control.

4. Member Updates

Anne Buchanan, Alzheimer’s Scotland are in the process of consulting with service users and carers to produce their third dementia strategy. This will be the last in a series of documents:

- First – five pillars model, looking at the first year of support after diagnosis
- Second – eight pillars model, looking at self-management
- Third – Advanced stages and end of life care

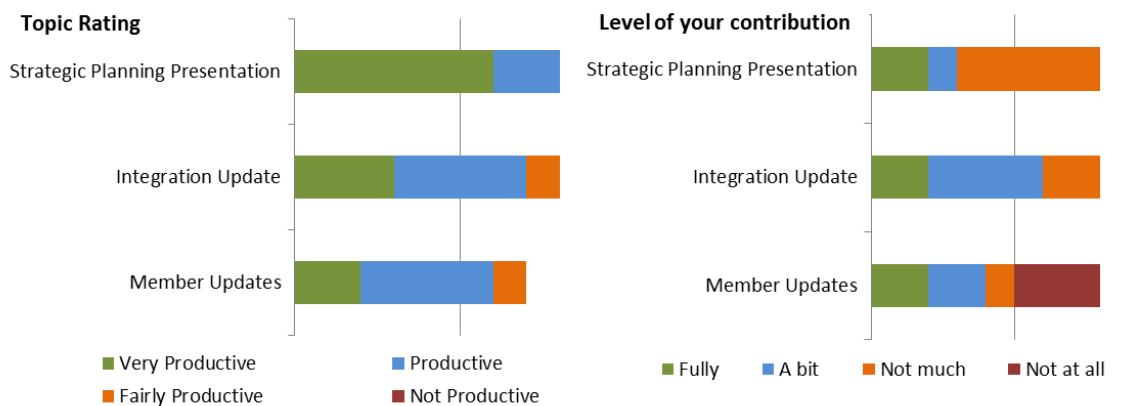
Action Anne Buchanan – to send Christine link to Alzheimer’s Scotland website

Elaine Fox, Energi had an update from the Mental Health Strategic Implementation Group (SIG)

- The SIG is linking in with the ‘Making Recovery Real’ work by the Scottish Recovery Network to look at how we can improve and develop more recovery focused services in Fife.
- Self-Directed Support will be integrated into integration. Further discussion about this at the next two SIG’s.
- Feedback – looking at how we evaluate service provision and how we can use these to embed evaluation into practice.
- Veteran’s Services – New services being rolled out in Fife – CARF, NHS Fife and Psychology.

Joanna Clark, Fife Voluntary Action - FVA is hosting a conference on Self-Directed Support in partnership with Real Life Options. ‘Making Local Choice a Reality’ is a free event on Wednesday 27 May. More information available [here](#).

Health and Social Care Forum Feedback



Feedback Summary

You would like to see more speakers/presentations covering specific issues.

You would like FVA to facilitate a workshop to discuss the strategic plan once it goes out for consultation.

You felt the forum was informative and well managed.

Future Attendance

- Will attend
- Will aim to attend
- Depends on agenda
- Will not attend

